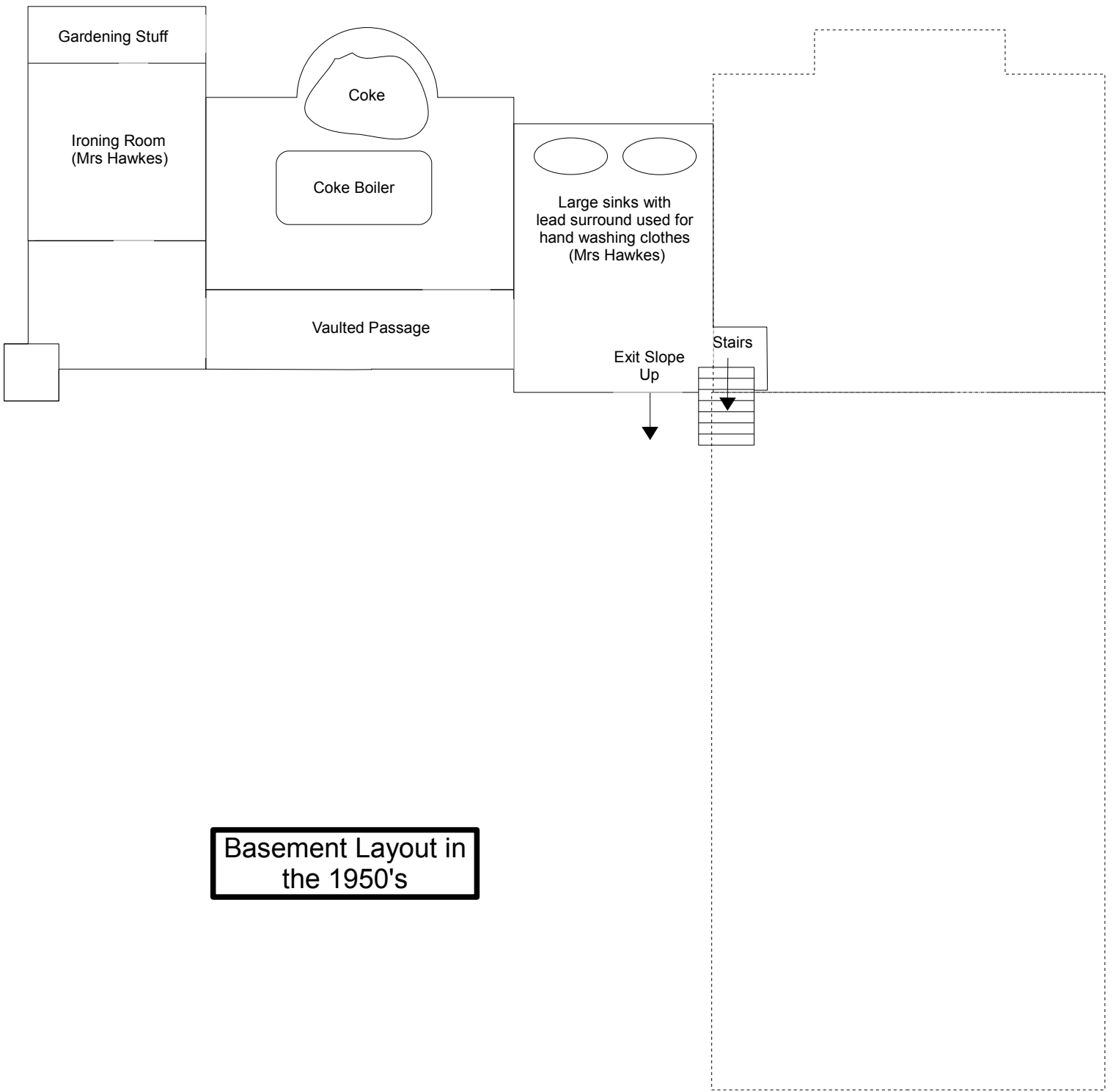


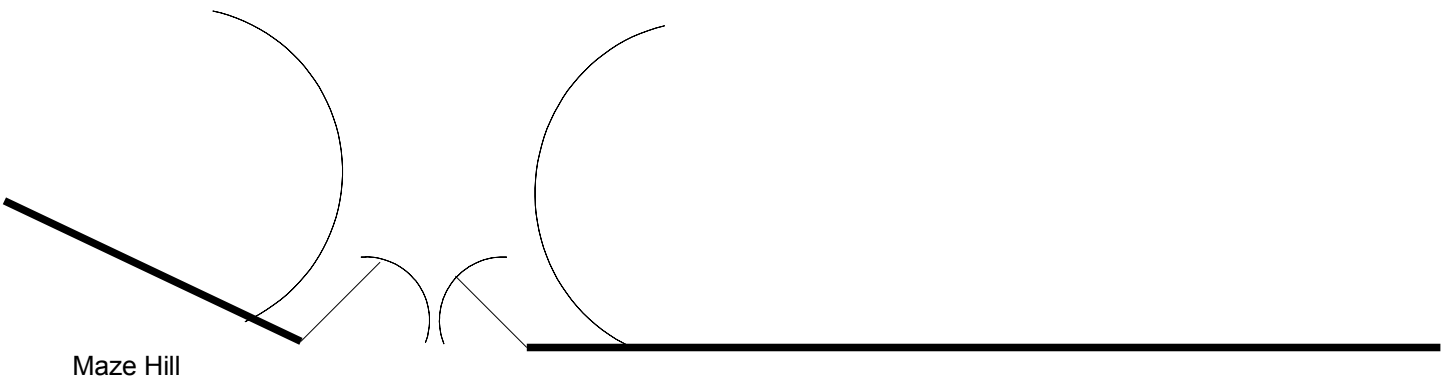
This document shows how
Vanbrugh Castle was arranged
in the 1950's when it was a
School run by the RAF
Benevolent Fund

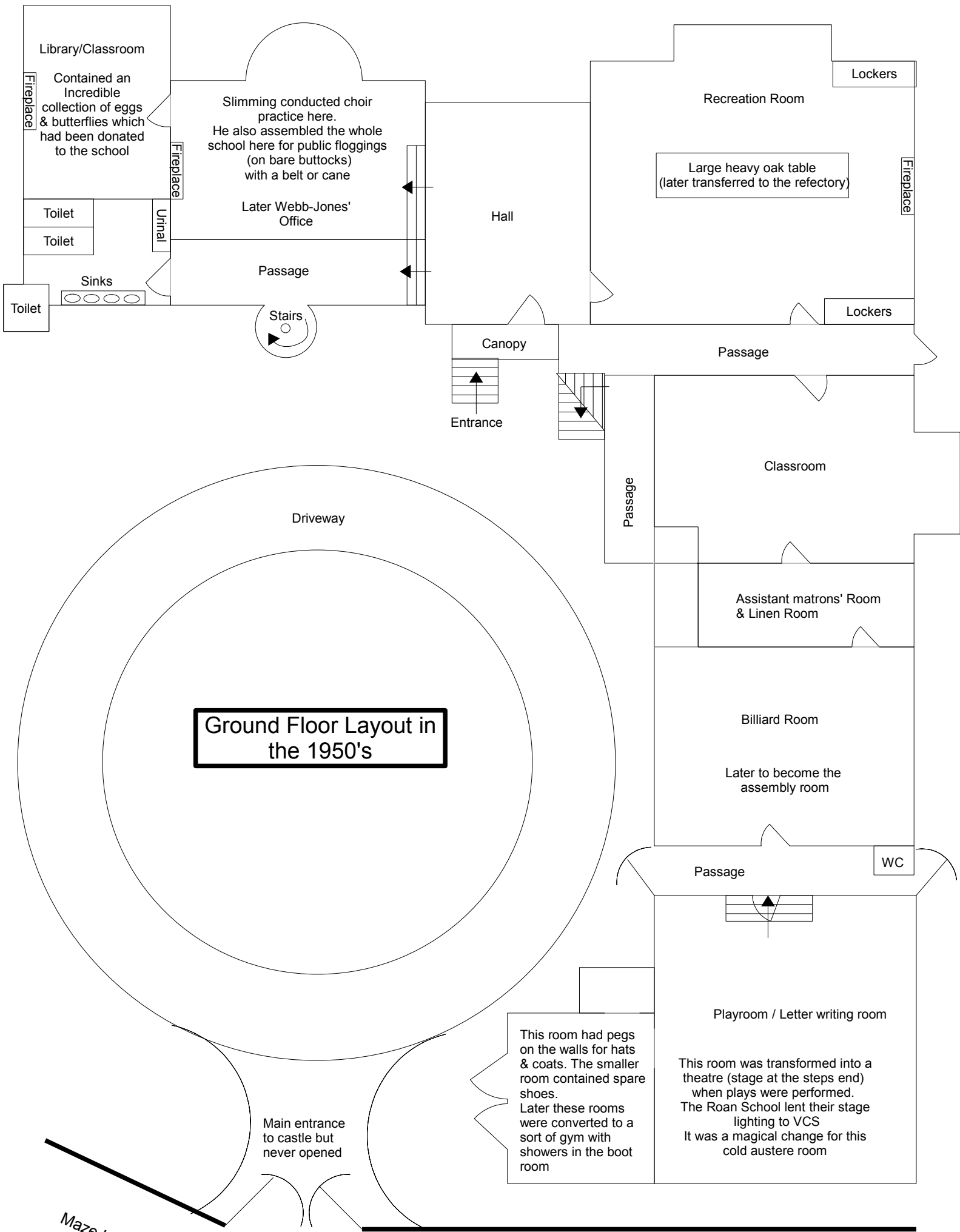


About 50 boys boarded here and in
the adjacent Wakefield Wing



**Basement Layout in
the 1950's**





Ground Floor Layout in the 1950's

Maze Hill

Westcombe Park Road

Library/Classroom
Contained an Incredible collection of eggs & butterflies which had been donated to the school

Slimming conducted choir practice here. He also assembled the whole school here for public floggings (on bare buttocks) with a belt or cane

Later Webb-Jones' Office

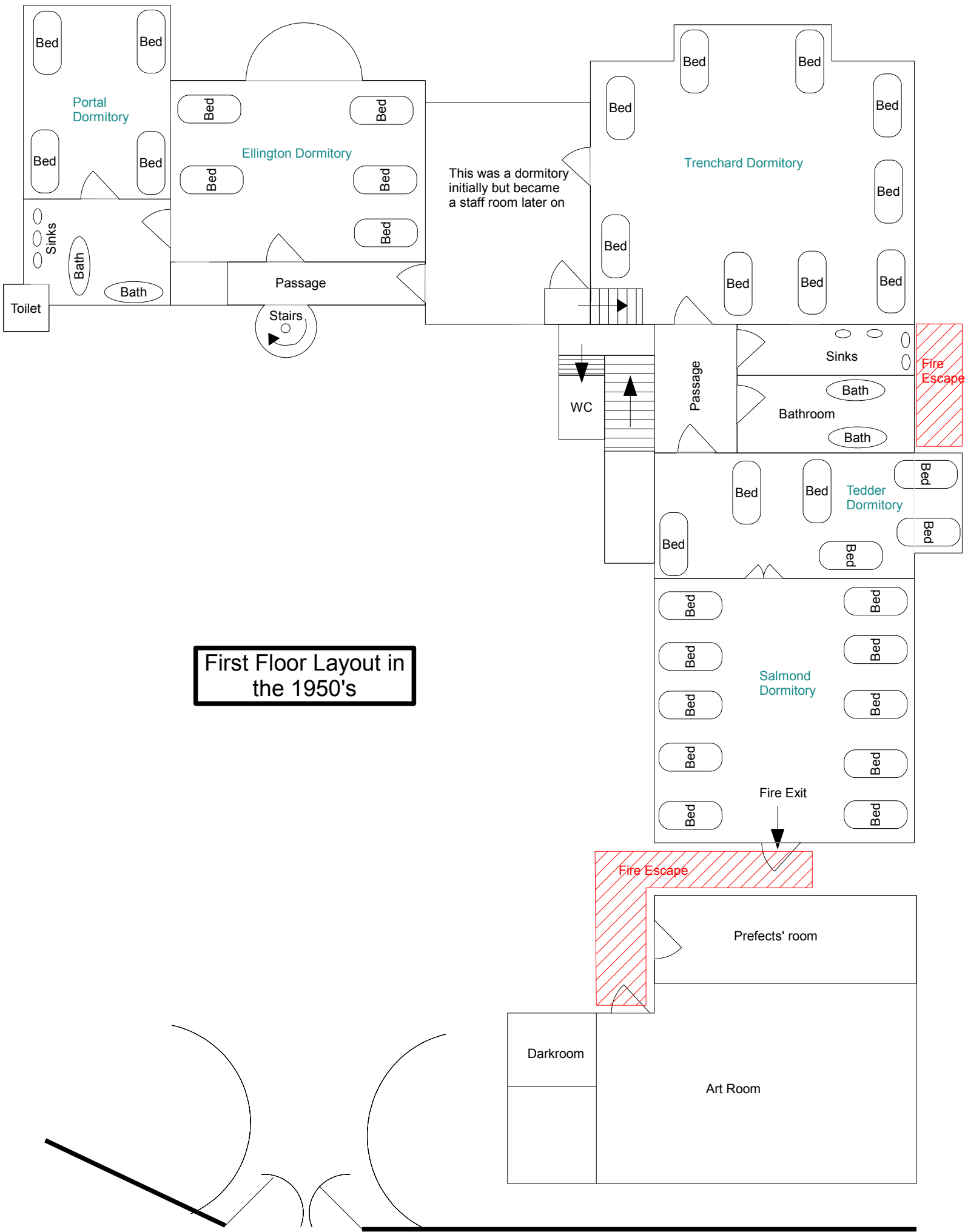
Large heavy oak table (later transferred to the refectory)

Ground Floor Layout in the 1950's

This room had pegs on the walls for hats & coats. The smaller room contained spare shoes. Later these rooms were converted to a sort of gym with showers in the boot room

This room was transformed into a theatre (stage at the steps end) when plays were performed. The Roan School lent their stage lighting to VCS. It was a magical change for this cold austere room

Main entrance to castle but never opened



First Floor Layout in the 1950's

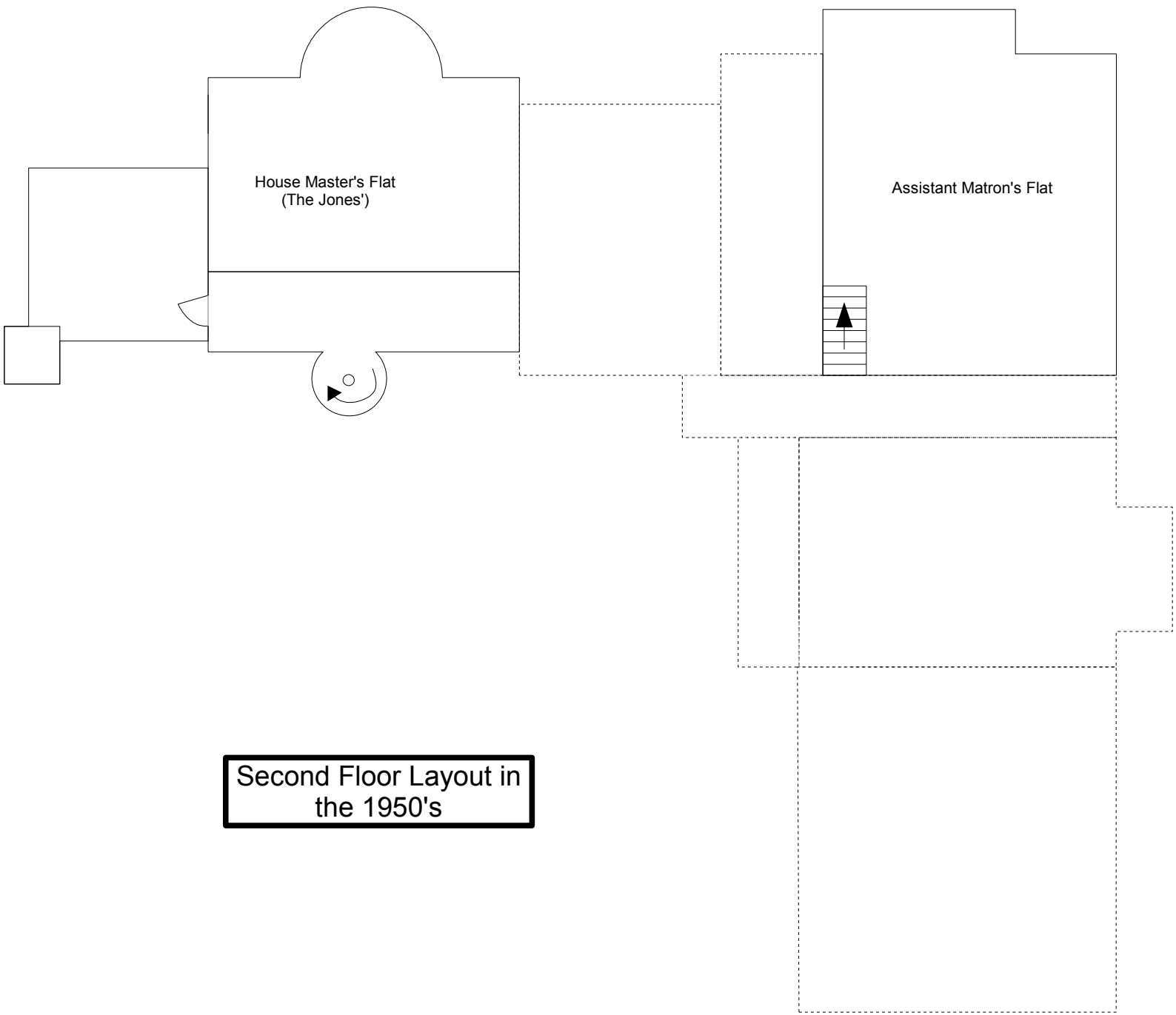
This was a dormitory initially but became a staff room later on

Fire Escape

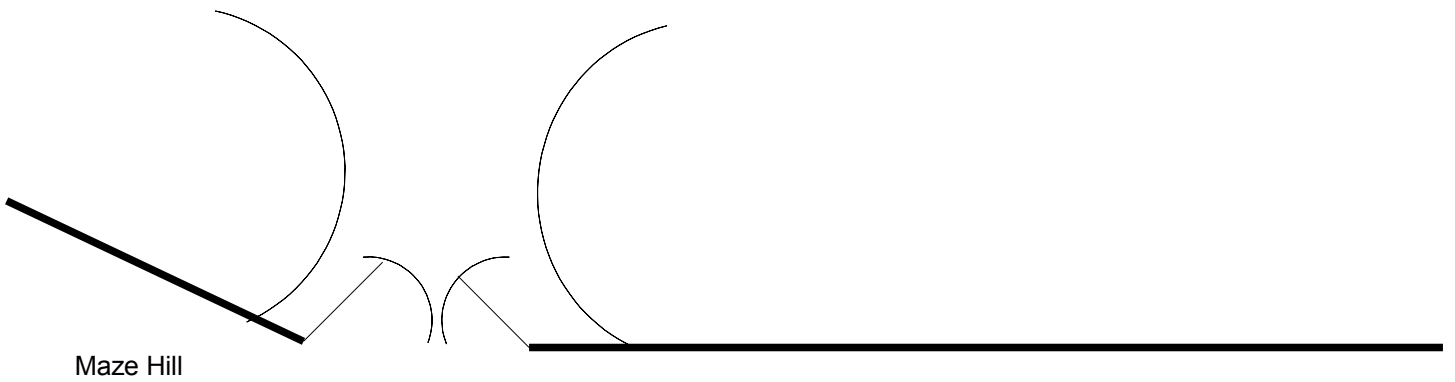
Fire Escape

Fire Exit

Maze Hill

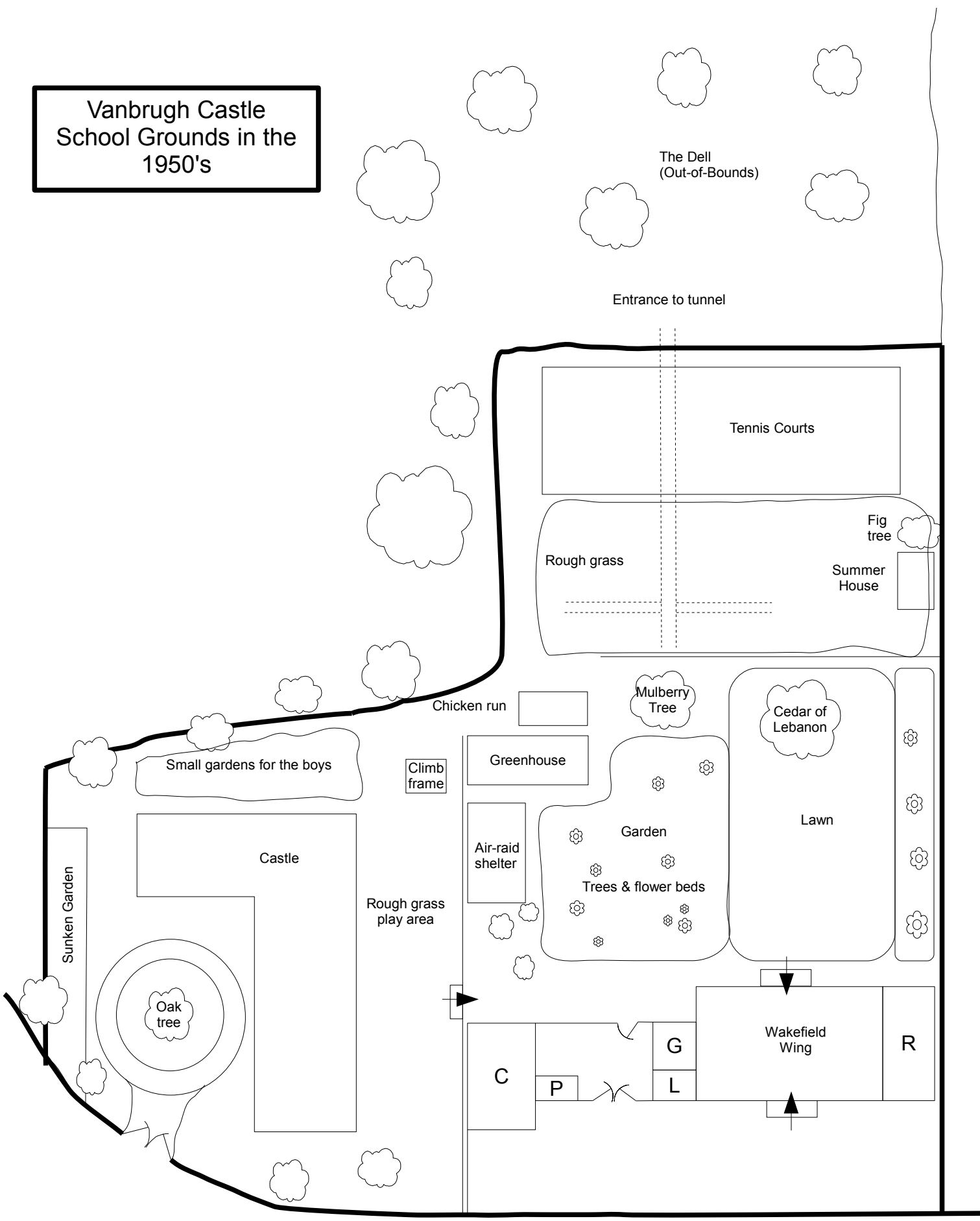


**Second Floor Layout in
the 1950's**



Maze Hill

**Vanbrugh Castle
School Grounds in the
1950's**



- Key**
- C - Coach house
 - P - Potting shed
 - G - Store room
 - L - Handyman's quarters (Pat Laverty)
 - R - Refectory